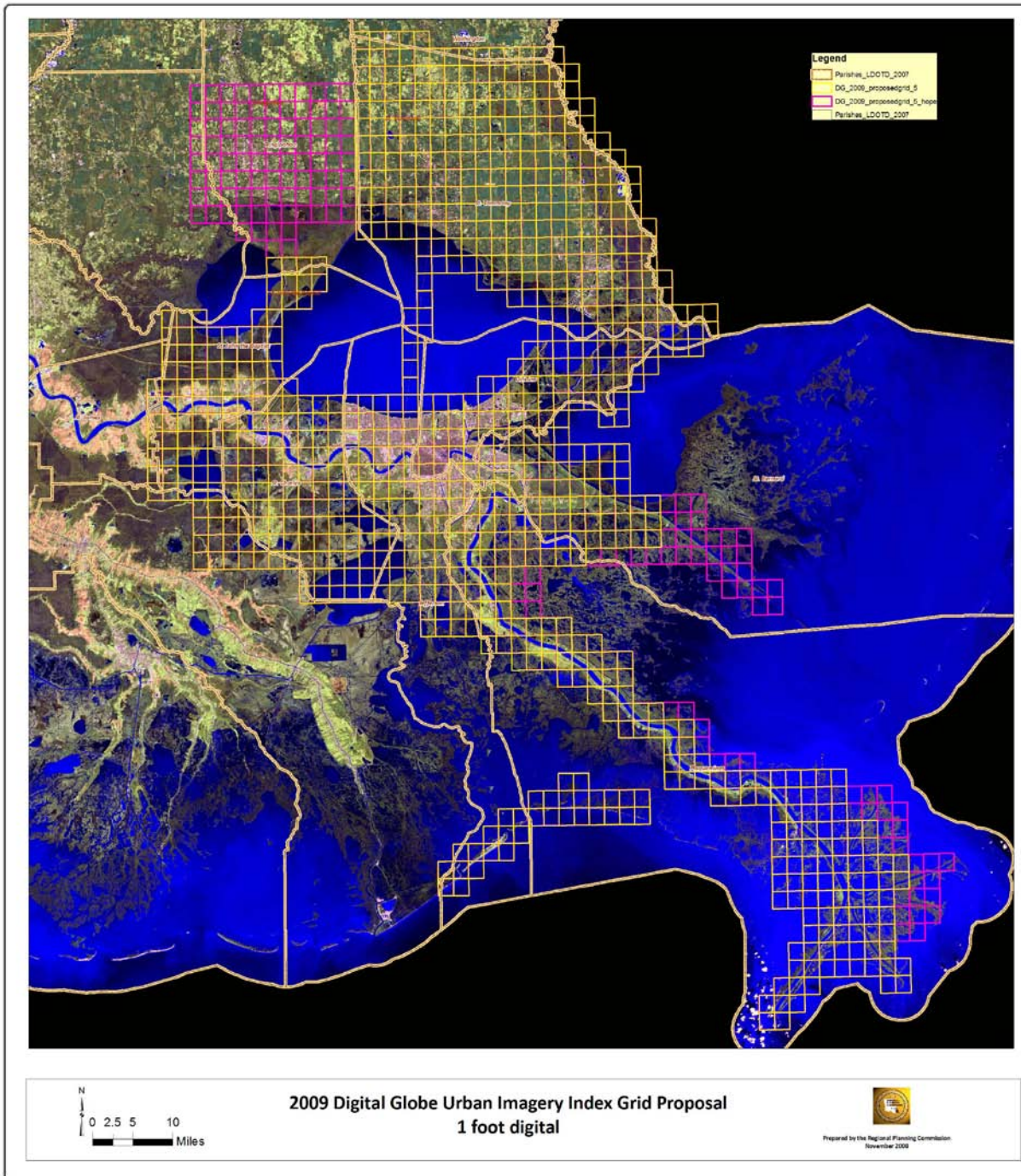


2009 Digital Globe Urban Imagery Index Proposal



This is the 2009 Southeast Louisiana 1-foot RGB flight area. The yellow squares are all funded. The pink squares are areas we do not have committed funding for. We also do not have a commitment for the NIR band. The entire area was captured in 4 bands. The data will become public two years after delivery – approximately May, 2011. The data is shared among all local parishes and state and federal agencies that are cooperative partners. Any consultant working on a project in the area for a government entity may request their project area imagery from the RPC and sign a disclaimer that they will not use it for commercial profit or distribute the data.